

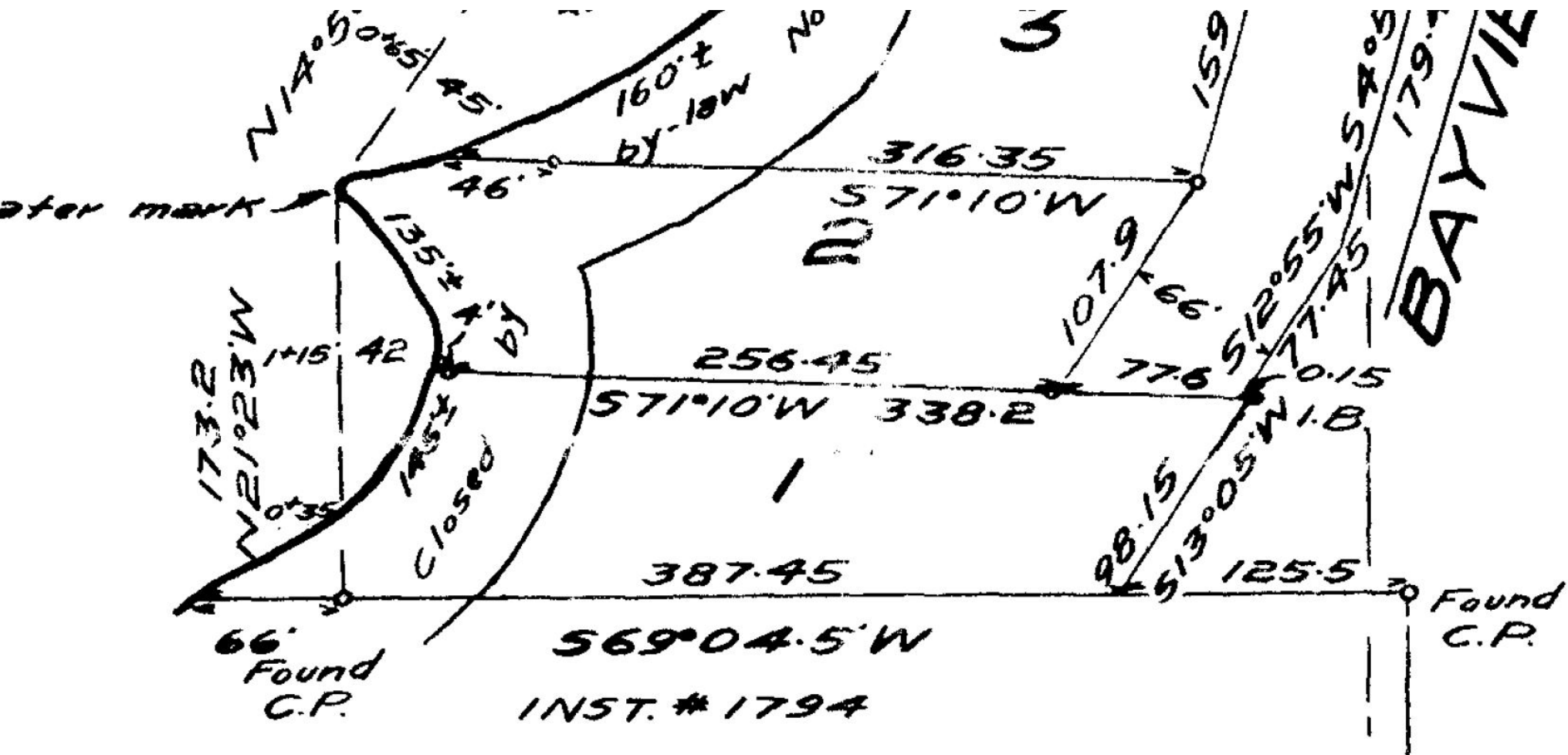
WITNESS

in the
 make oath and say:
 personally present and did
 and duplicate duly signed
 Mitchell, E.C. Mitchell, and Lloyd F. McClellan
 plan and duplicate were
 said parties at the Village of Rosseau.
 the said parties.
 subscribing witness to the

FITZMAURICE & BOYER
 Bracebridge, Ontario.

PLAN 191

Approved under Section 26 of
 THE PLANNING ACT
 This 21st day of April 1955



4-HUM-IV-2

Reg. Plan No. 191

Reg'd. Plan No. 191.

PLAN OF SUBDIVISION PARTS OF LOTS 6, 7 & 8 CON. 4 TOWNSHIP OF HUMPHRY DISTRICT OF PARRY SOUND

Scale - 100 feet to an inch.

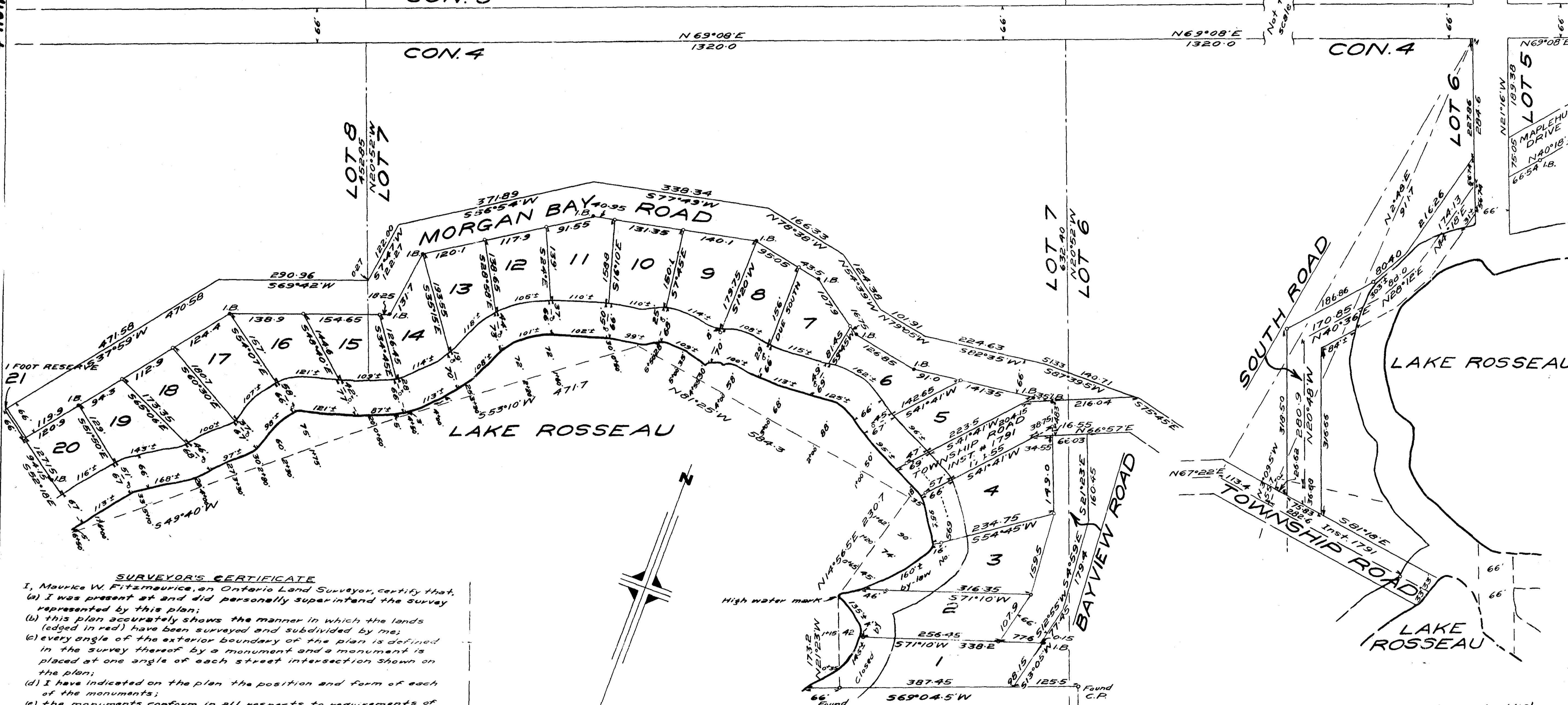
CON. 5

CON. 5

CON. 4

CON. 4

LOT 5
N69°08'E
75.05
189.38
N40°18'E
66.54 I.B.



SURVEYOR'S CERTIFICATE

I, Maurice W. Fitzmaurice, an Ontario Land Surveyor, certify that:

- I was present at and did personally superintend the survey represented by this plan;
- this plan accurately shows the manner in which the lands (edged in red) have been surveyed and subdivided by me;
- every angle of the exterior boundary of the plan is defined in the survey thereof by a monument and a monument is placed at one angle of each street intersection shown on the plan;
- I have indicated on the plan the position and form of each of the monuments;
- the monuments conform in all respects to requirements of section 12 of The Surveys Act;
- the survey was made by me between the 30th day of August and the 10th day of September 1955 and
- the survey has been accurately made in accordance with all the provisions of The Surveys Act and The Registry Act relating thereto.

Dated at Bracebridge the 18th day of April, 1955.

Maurice W. Fitzmaurice,
ONTARIO LAND SURVEYOR

OWNERS' CERTIFICATE

Lots 1 to 20 inclusive, and lot 21 a 1 foot reserve, within the boundaries edged in red have been laid out in accordance with our instructions, and the streets namely South Road, Bayview Road and Morgan Bay Road within the said boundaries are hereby dedicated as public highways.

Witness

Owner

District AFFIDAVIT OF WITNESS

County of Parry Sound
To Wit:

I, _____ in the _____
of the _____ make oath and say:

- That I was personally present and did see this plan and duplicate duly signed by Frederick Peise Mitchell, E.C. Mitchell, and Lloyd F. McClelland of Bracebridge, Ontario.
- That the said plan and duplicate were signed by the said parties at the Village of Rosseau.
- That I know the said parties.
- That I am a subscribing witness to the said signing.

Sworn before me at _____
in the _____ of _____
this 16th day of _____ 1955.

A Commissioner, etc.

Witness

PLAN 4-66

FITZMAURICE & BOYER

Bracebridge, Ontario.

Approved under Section 26 of
THE PLANNING ACT

This 21st day of April, 1955

Wm. K. W...
MINISTER OF PLANNING & DEVELOPMENT

Distances are in feet and tenths (or hundredths).
Bearings are astronomic and derived from the
northern limit of Lot 5, Con. 4.
• I.B. indicates iron post.
• I.B. " " bar 1" square x 4' long.

ILLUSTRATIVE

Source – GeoWarehouse

Actual Measurements May Vary

